

Discontinuation Notice

Brother Gearmotor hereby announces the discontinuation of the products below

■ Discontinued Products

| Series | | Target Models | | | Replacement Model | | |
|------------------------------|---------------------------|---|---|---------------------|--|--|---------------------|
| GTR-AR BLDC Gear Motor | AEF | Gear Motor | All Capacities | | GTR-eco IPM Series Position Control Type | All Capacities | |
| | | Driver | | | | | |
| | APQ | Gear Motor | All Capacities | | GTR-eco IPM Series Speed Control Type | All Capacities | |
| | | Driver | | | | | |
| GTR Induction Motor | NEXT GTR New MID | F3 Type Frame 50 and 55 ※1 Details in next page | 1.5kW | Ratio 1/80-1/240 | F type frame 55 ※1 Details in next page | 1.5kW | Ratio 1/80-1/240 |
| | | | 2.2kW | Ratio 1/40-1/120 | | 2.2kW | Ratio 1/40-1/120 |
| | MID | 1Ph Manual Release brake | All Capacities | | No replacements available. | | |
| | | Re-inforced Clutch brake | 0.2kW 0.4kW | | Standard Clutch Brake | 0.4kW 0.75kW | |
| | | Double Voltage Clutch brake (w/ exposed lead wires) | All Capacities | | Double Voltage Clutch brake (w/ terminal box) | All Capacities | |
| | GTR-eco IPM | IPM | F3 Type Frame 50 and 55 ※1 Details in next page | 1.5kW | Ratio 1/80-1/240 | F type frame 55 ※1 Details in next page | 1.5kW |
| 2.2kW | | | | Ratio 1/40-1/120 | 2.2kW | | Ratio 1/40-1/120 |

■ Transition Period (Acceptance of last order)

The above items will be officially discontinued after the end of June, 2021.

■ Replacement availability

Nissei may provide orders for replacement up to 7 years after discontinuation. (June, 2028)

※The final cut date may change depending on inventory and market situations.

※Price and lead time of the products will change after the official discontinuation date.

■ Contacts (TEL)

Nissei Corporation

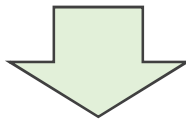
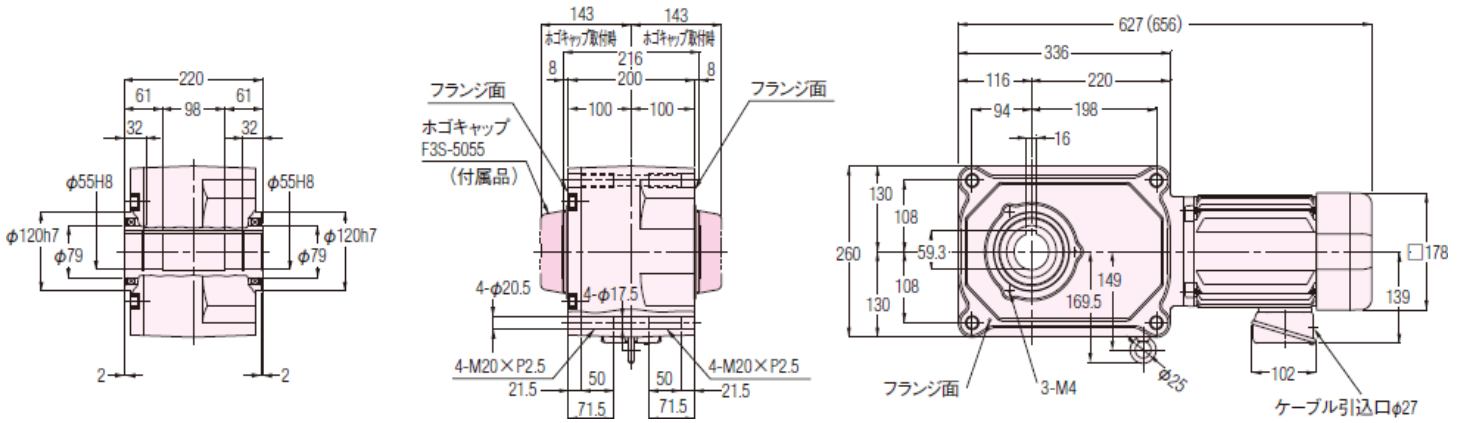
●Tokyo Office : 03-5695-5411 ●Nagoya Office : 0566-92-7410 ●Osaka Office : 06-6210-1157

●Oversea Sales Office : 0566-92-5312

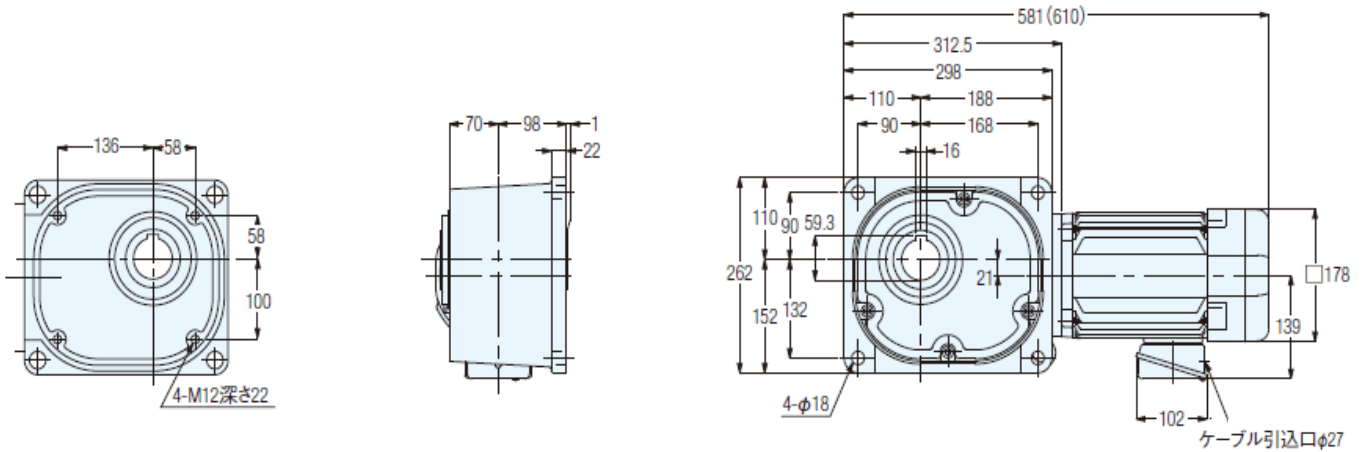
●Customer Service Center (Japanese only) : 0120-889-867

■Difference between "F3 Type Frame 55 and "F type frame 55" (※1)

F3 Series | **1.5kW** | **Frame55** | **Ratio: 1/80-1/240**

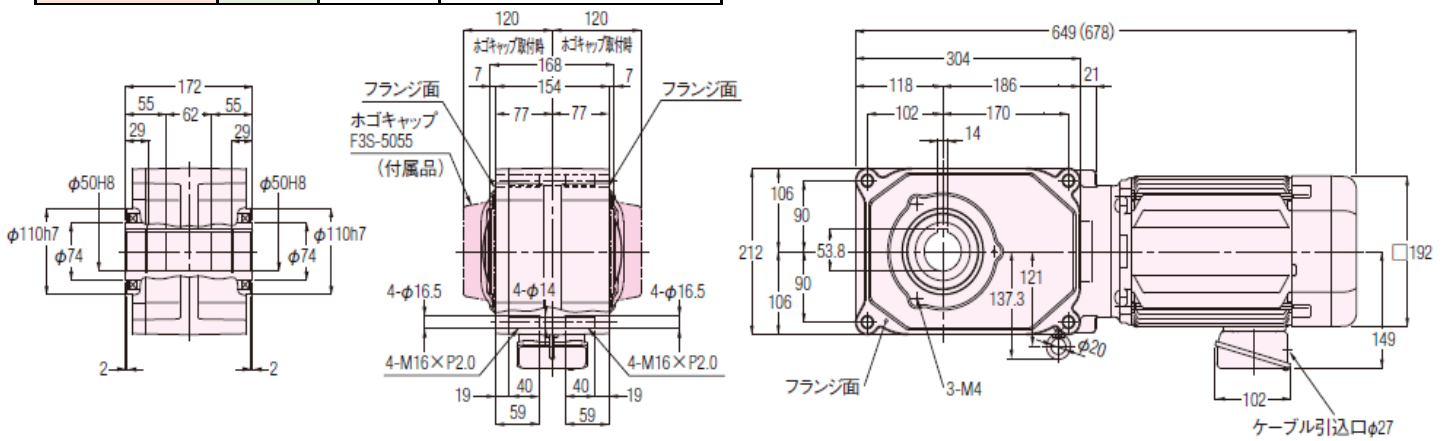


F Series | **1.5kW** | **Frame55** | **Ratio: 1/80-1/240**

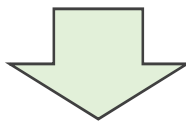
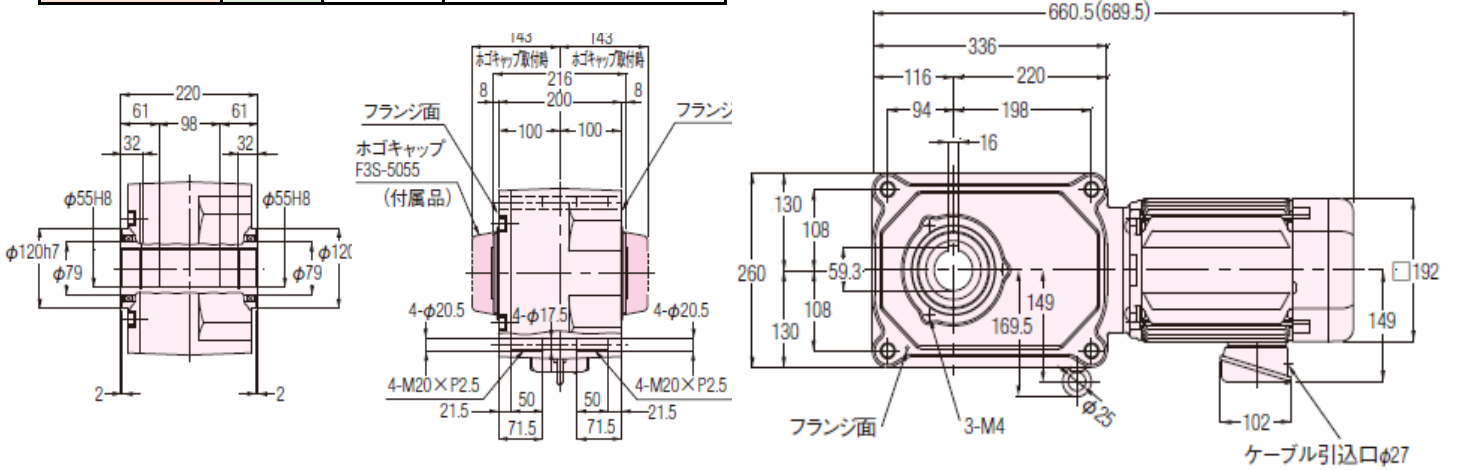


■Difference between "F3 Type Frame 55, Frame 50 and "F type frame 55" (※1)

F3 Series | **2.2kW** | **Frame55** | **Ratio: 1/40-1/60**



F3 Series | **2.2kW** | **Frame55** | **Ratio: 1/80-1/120**



F Series | **2.2kW** | **Frame55** | **Ratio: 1/40-1/120**

